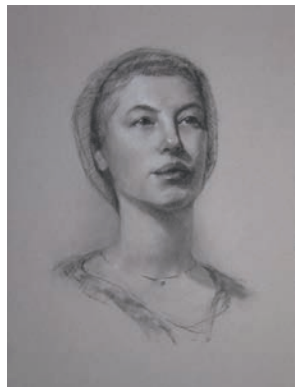


**MATERIALS LIST** Please bring the following:*"Sarah Jane"*

- Notebook and pen/pencil for taking notes.
- Soft Vine Charcoal
- Charcoal Pencils—Black and white. (A General's pack that has 3 hardnesses, a white pencil and kneaded eraser is ideal for the workshop.)
- Kneaded Eraser
- Newsprint and/or an economical sketching paper (I recommend Strathmore sketching paper or similar, at least 14" x 18" notepad or similar).
- 1 or 2 sheets of gray tinted paper or similar for more finished drawings (see photo).
- Masking tape or clips to secure your paper.
- A drawing board to attach your paper to (medium or large size).
- Pencil Sharpener.
- A wooden skewer, or knitting needle, or a very fine long brush handle, or similar to use as a comparative measuring tool.

**OPTIONAL** Optional items, not needed for the workshop but fun to have.

- A cheap 1" flat brush with natural hog bristles for blending and softening.
- Chamois cloth for lifting/blending charcoal.
- A retractable/refillable eraser pen (used to erase sharper lines than is possible with a kneaded eraser). The eraser can be recut periodically with an exacto knife to create sharp edges on the eraser.
- Dry erase pad for soft erasing and cleaning up backgrounds (used in mechanical drawings).
- A travel sketchbook and .07mm mechanical pencil and leads—used for sketching on the run.
- Any favorite drawing medium such as conte, sanguine, brown pencils, etc.

If you have questions, please contact Suzann Beck by email,  
[Suzann\\_Beck@email.com](mailto:Suzann_Beck@email.com), or call 763.536.8055 or cell 612.619.4010.

**S U Z A N N     B E C K**

*oil portraits • commissions • fine art • workshops*

